

•fuel

Fuel presents

# THE 419

Visual Story



# Contents

Introduction Page 3

About the artists Page 4-5

What will you see and hear? Page 6

Key information about the exhibition Page 7

Visiting the West Wing and West Wing galleries Page 8

Key information about the venue (including access) Page 9 - 11

About Fuel Page 12



# Introduction

The 419 is a playful poetry and photography exhibition, where 14 sonnets and 14 portraits show how money flows through 14 lives on a typical day in Lagos, Nigeria.

Whilst researching his play Barber Shop Chronicles in Lagos, poet Inua Ellams kept seeing the warning “This house is not for sale. Beware of 419” spray-painted on houses. His guide explained this referred to conmen breaking into and selling properties when their owners were away.

Curiosity into what set of circumstances could drive such ‘entrepreneurial’ risk-taking led Inua to write a series of interlinked ‘Nigerian Sonnets’ in the voices of men and women of various ages and socio-economic backgrounds, from a market labourer to a musician, to an elected official.

These poems are snapshots of the hurdles faced by each individual, and who they ask to help overcome them. Humorous and heartfelt, they collectively subvert the 419 stereotype.

Ultimately, The 419 sheds light on the economics of life in Africa’s most populous city.

This exhibition will take place from the 8<sup>th</sup> to the 14<sup>th</sup> of September in the West Wing Galleries, Somerset House.

Commissioned and produced by Fuel.

Supported by Arts Council England.

The 419 was developed with the support of the Immersive Storytelling Studio, National Theatre.

## About the Artists

Inua Ellams

Poet



Born in Nigeria, Inua Ellams is a poet, playwright and performer, graphic artist and designer.

He is a Complete Works poet alumni and facilitates workshops in creative writing where he explores reoccurring themes in his work - Identity, Displacement and Destiny.

He founded The Midnight Run (an arts-filled, night-time, urban walking experience.) The Rhythm and Poetry Party (The R.A.P Party) which celebrates poetry and hip hop, and Poetry + Film / Hack (P+F/H) which celebrates Poetry and Film. He is a Fellow of the Royal Society of Literature.

Theatre includes: The 14th Tale (Fuel, Arcola/National Theatre/UK tour); Black T-Shirt Collection (Fuel, UK/World tour); The Riddler (Fuel, Theatre 503); Barber Shop Chronicles (also UK tour), Three Sisters (Fuel, National Theatre); New Dogs (Fuel, Soho); The Calm (Fuel, RSC); The Half-God of Rainfall (Fuel, Kiln); An Evening with an Immigrant (Fuel, UK & international tour).

Awards include: Edinburgh Fringe First Award 2009; The Liberty Human Rights Award; The Live Canon International Poetry Prize; The Kent & Sussex Poetry Competition; Magma Poetry Competition; Winchester Poetry Prize; Best Theatre Production for The Half-God of Rainfall, Black British Theatre Awards; The Hay Festival Medal for Poetry.



## Oluwamuyiwa “Logor” Logo

Photographer

Logor is a photographer & filmmaker who lives and work in Lagos, Nigeria. His approach also revolves around conceptual and documentary style photography.

Logor’s interest in photography is to be a shrewd observer of the human carnival by capturing people, things and stories from perspectives that are often overlooked, ignored and taken for granted.

Logor was in London for his first solo exhibition and a month arts residency with the Future Assembly (2016). He was in Manila, the Philippines for a short residency where he developed his new series “Elephant in The Room”.

He was also part of the Gated Communities workshop (2015), first in Manila, and then in Lagos.

Logor has shown in selected exhibitions like Lagos: Hustle & Hope (2015), Young Contemporaries (2016), Rele Gallery; Down The Rabbit Hole saloon exhibition, Alara Concept store (2016), Call & Response, Bozar Art Festival, Brussels (2016).

[www.monochromelagos.com](http://www.monochromelagos.com)

# What will you see and hear?

The exhibition is comprised of 14 images that accompany 14 poems. These will be on the walls of the exhibition space where you can view them. There will also be QR codes to scan from your personal devices to listen to audio recordings of the poems, and audio descriptions of the images.

The photos and poems will be in the following order:

01 / Area Boy - Zaria

02 / Market Labourer - Ronke

03 / Market Woman - Chidinma

04 / House Girl - Mary

05 / Taxi Driver - Uche

06 / Traffic Warden - Jinadu

07 / Construction Worker - Akin

08 / Foreman - Tony

09 / Architect - Tosin

10 / Doctor - Ogaji

11 / Entertainer - Chike

12 / Manager - Hauwa

13 / Event Manager - Yewande

14 / Local Governor - Bamidele



## Key Information about the exhibition

**Exhibition duration:** This exhibition has no set time slots, but if you would like to enjoy all images and audio descriptions it may take around 20 -30 minutes.

**QR Codes:** These QR codes will take you to the Fuel website where the audio accompaniment will be played - headphones will not be provided so please make sure you bring your own pair.

**Age Guidance:** The suggested age guidance for this exhibition is 12+

**The space:** The exhibition will take place in the West Wing Galleries at Somerset House.

**Address:** Strand, London WC2R 1LA

This gallery is accessed directly via the Edmond J. Safra Fountain Court.

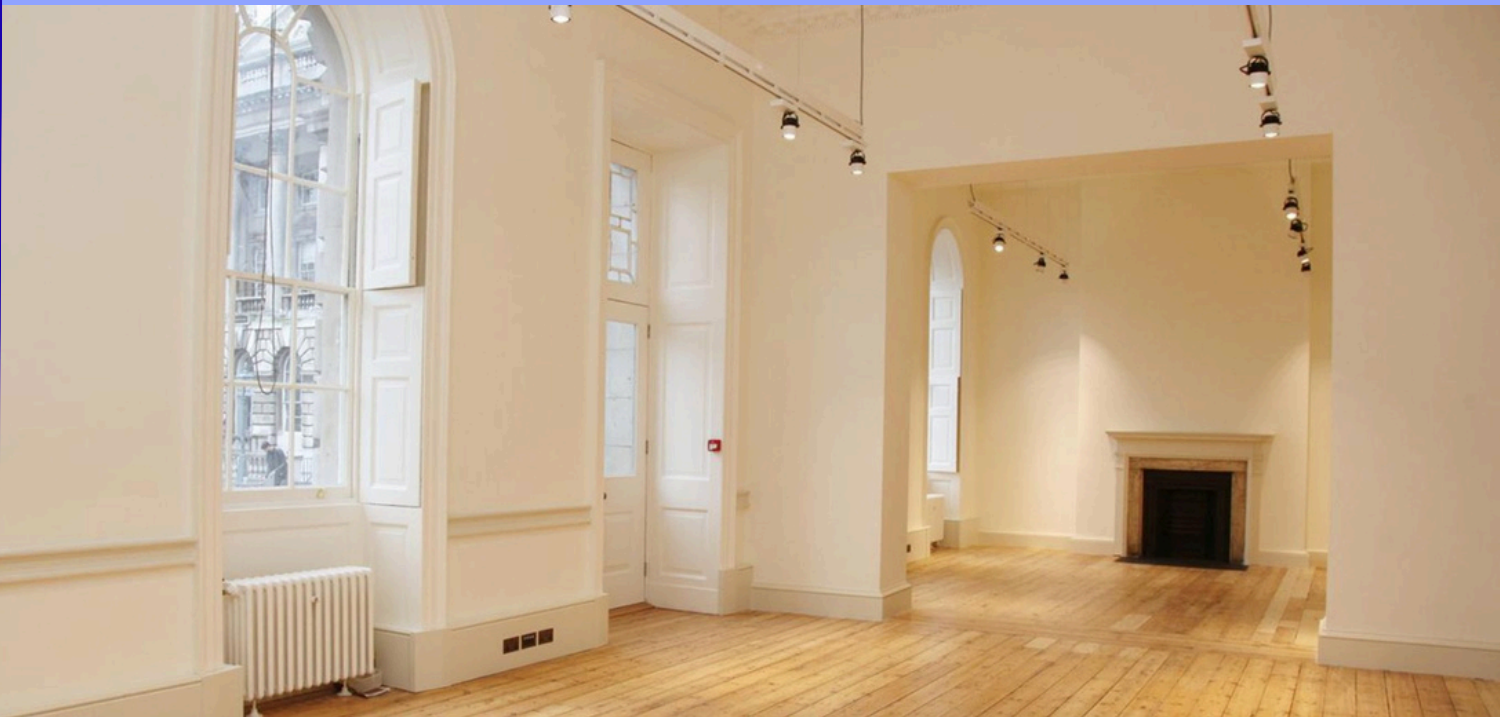


# Visiting the West Wing including West Wing Galleries

The Strand entrance is the accessible route.

There are two steps from the courtyard to the West Wing exhibition entrance.

For step free access use the east ramp of the South Wing and continue past Seaman's Hall to the West Wing.



## Key Info About the venue Including Access

### Guide and Assistance Dogs

Guide dogs and hearing dogs are welcome throughout Somerset House.

All other dogs are welcome on the River Terrace and in The Edmond J. Safra Fountain Court during regular opening hours. Only registered assistance dogs are permitted on-site during ticketed courtyard events and inside exhibitions and events.

### Borrow a Wheelchair

Standard sized manual wheelchairs are available for visitors with mobility impairments. These can be booked in advance by emailing:

[visitor@somersethouse.org.uk](mailto:visitor@somersethouse.org.uk)

On the day you may borrow a wheelchair (subject to availability) by speaking to any Receptionist at one of our entrances.



## Electric Mobility Scooters

Visitors are welcome to use electric mobility scooters throughout Somerset House.

## Cloakrooms

There are no cloakroom or luggage storage facilities at Somerset House.

## Changing Facilities

Baby changing facilities are available on site at the locations below.

New Wing

South Wing Strand Level (next to Café Petiole)

South Wing Embankment Level (next to the Great Arch Hall)

For information about other changing facilities in the area please visit [www.changing-places.org/find](http://www.changing-places.org/find).



## Contact Somerset House

If you would like to discuss your visit or share your feedback with one of our Visitor Experience Team please email [visitor@somersethouse.org.uk](mailto:visitor@somersethouse.org.uk) and we will get back to you as soon as we can.

## Accessible Toilets

New Wing (please advise reception staff who will show you the route)

South Wing Strand Level

2 Accessible Toilets (one next to Café Petiole, one opposite the end of the terrace rooms)

South Wing Embankment Level (next to the Great Arch Hall)

East Wing via WatchHouse entrance





Fuel leads the field in independent producing in the UK's live performance sector, working with brilliant artists to explore the big questions of our times. From theatres to car parks, from schools to public spaces, Fuel produces high quality new theatre that reaches diverse audiences across the UK and internationally.

Celebrated for its pioneering producing model that develops innovative ideas through attentive collaboration, a spirit of curiosity, and an emphasis on trust, Fuel has developed a reputation for spirited and surprising new theatre, deep relationships with a wide range of artists, and passionate commitment to inclusion and care for young and diverse audiences.

Founded in 2004 and led by Kate McGrath, Fuel has produced shows, festivals, films, installations, podcasts, apps and books, supporting the development of over 120 lead artists or companies and reaching over 1.5 million people, live and digitally, and is recognised with awards for its work.

Fuel is currently working with artists and companies including Khalid Abdalla, Will Adamsdale, Jay Bernard, Inua Ellams, Natalie Ibu, Racheal Ofori, Toby Olié, Suspect Culture, Joelle Taylor, Uninvited Guests, and Melanie Wilson. Fuel is supported by Arts Council England as a National Portfolio Organisation, the Esmée Fairbairn Foundation, and the PRS Foundation (Talent Development Network).

